

Using poverty mapping to identify legal need

Community Legal Centres NSW
Conference 2023

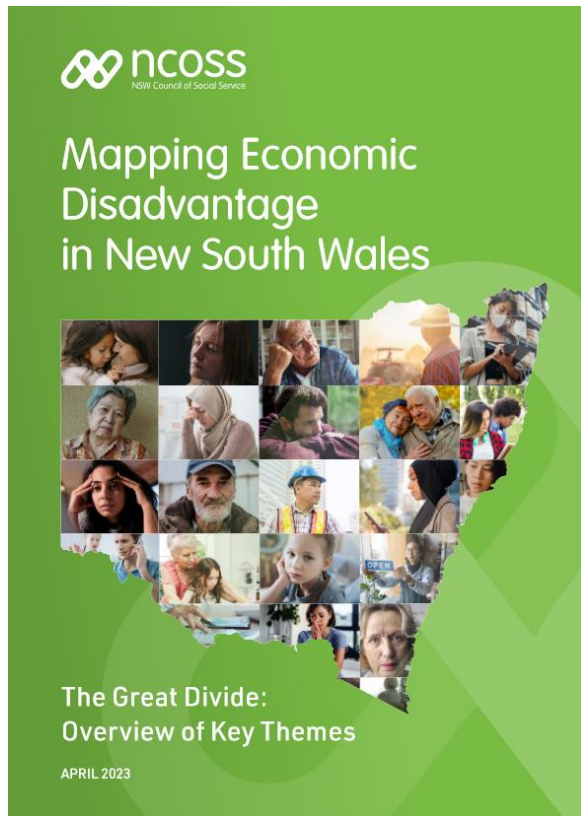
6 September 2023

Welcome!

The purpose of the session is to:

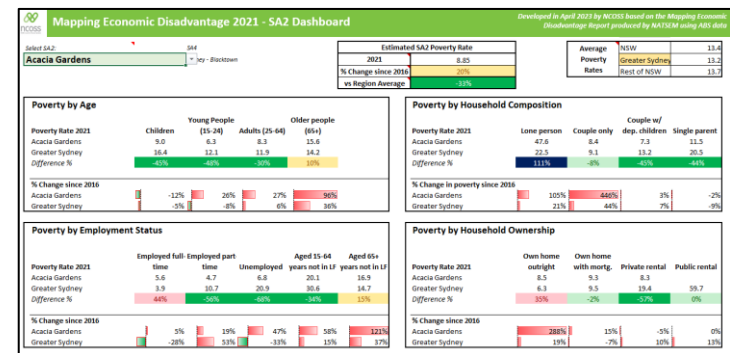
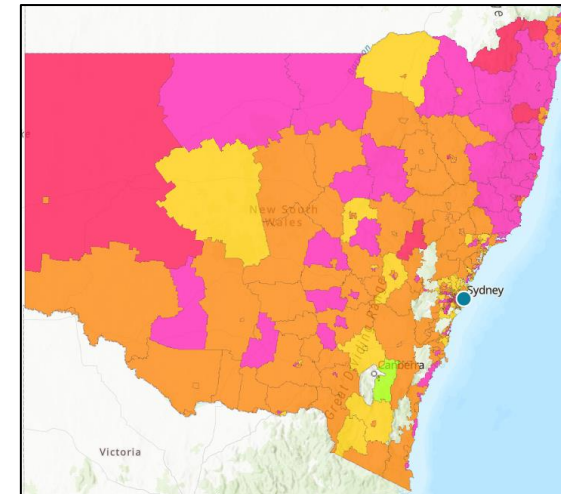
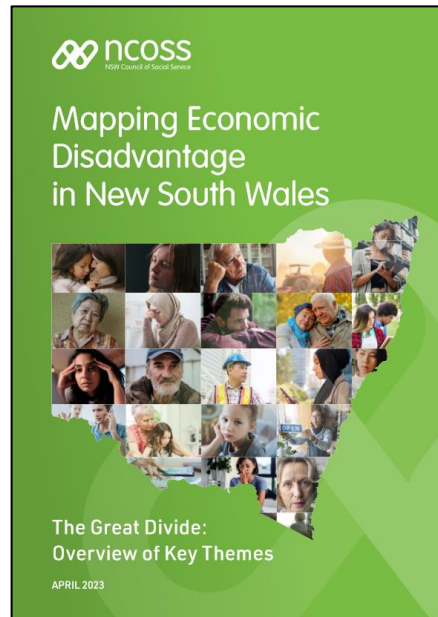
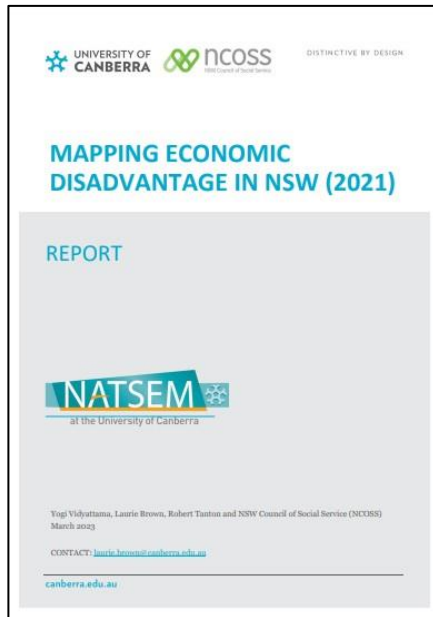
- Briefly outline the key findings of the *Mapping Economic Disadvantage in NSW* research, including themes regarding who experiences poverty and where
- Demonstrate how to use the data visualisation tools (Online Maps and Dashboard)
- Provide an opportunity for us to take the tools for a spin

Mapping Economic Disadvantage in NSW



- Second Mapping Economic Disadvantage in NSW report, in collaboration with NATSEM
- Census and ABS data 2021
- Analyses and maps poverty rates for demographics across the state (age, sex, employment, family arrangements, and housing tenure)
- Compares results to 2016

Two reports and two data tools



12 Key Themes

(1/3)

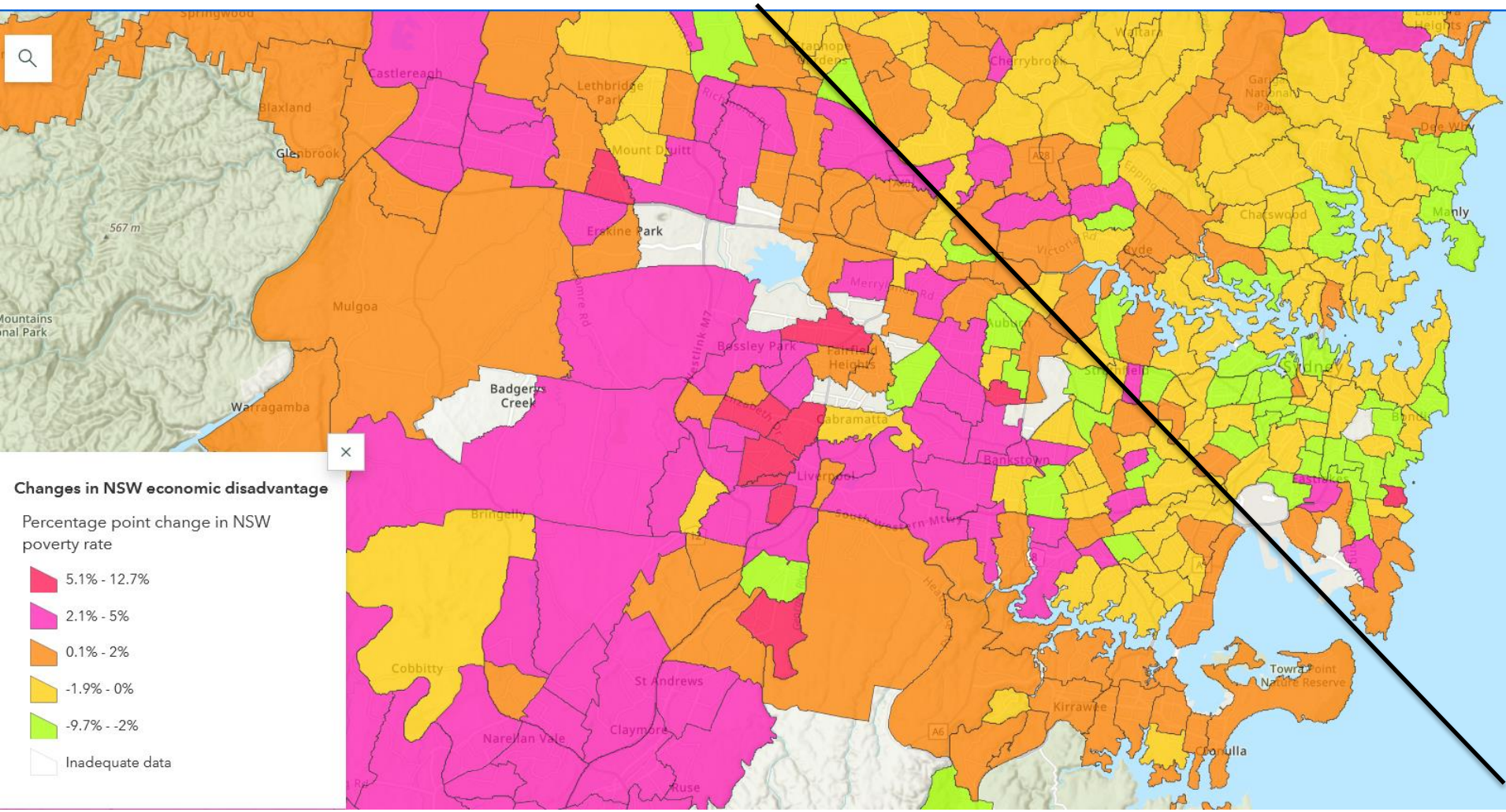


NSW now has one million people living in poverty

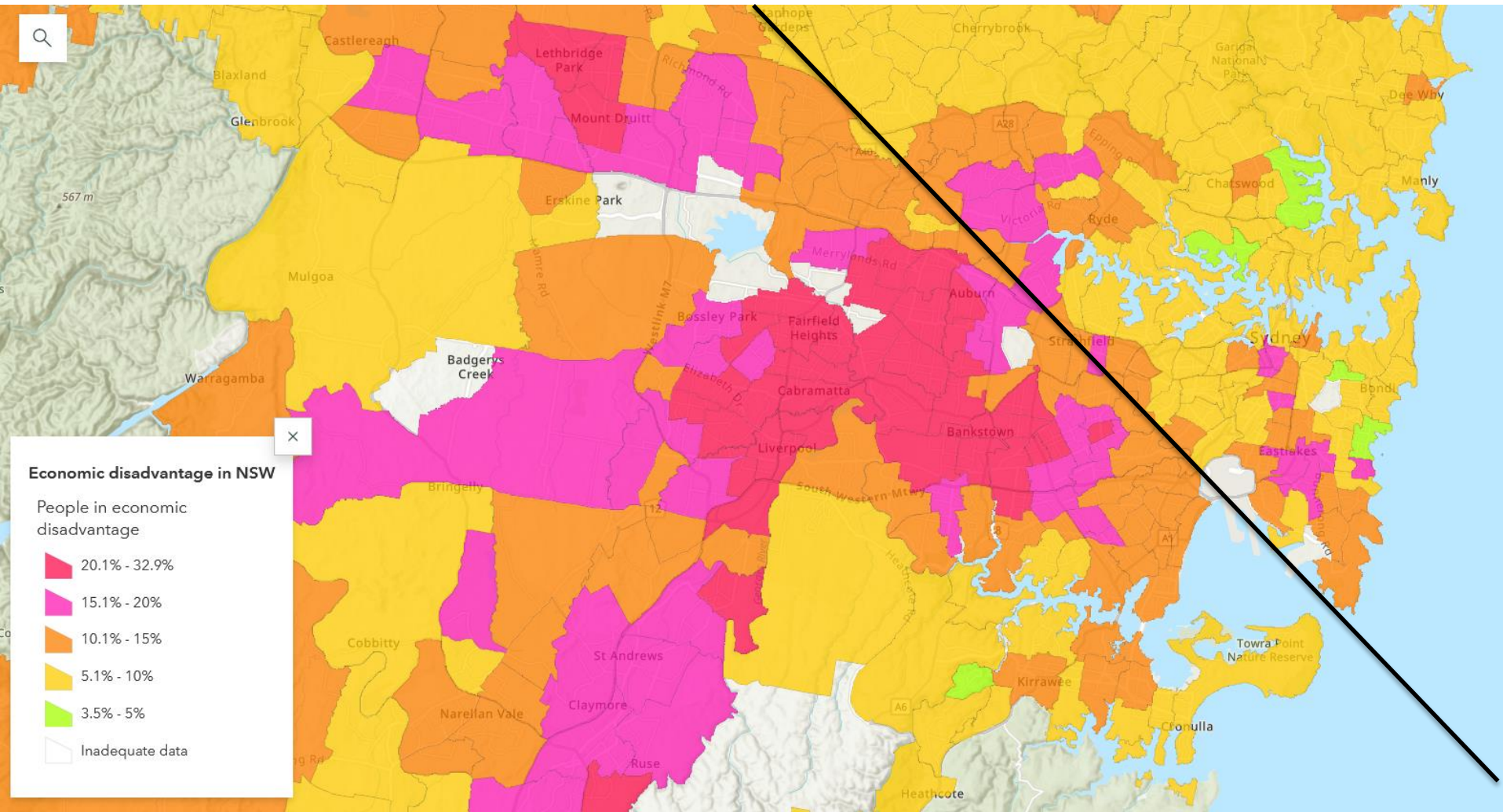


Sydney has a significant poverty divide and it's getting worse

Poverty Rate – Greater Sydney – Change



Sydney's Great Poverty Divide



12 Key Themes

(1/3)



NSW now has one million people living in poverty



Sydney has a significant poverty divide and it's getting worse



The poverty rate across rural and regional NSW is slightly higher, but the impacts are markedly different

- Young People – 25% higher
- Unemployed – 86% higher
- Single Parents – 39% higher
- Owners with a mortgage – 80% increase

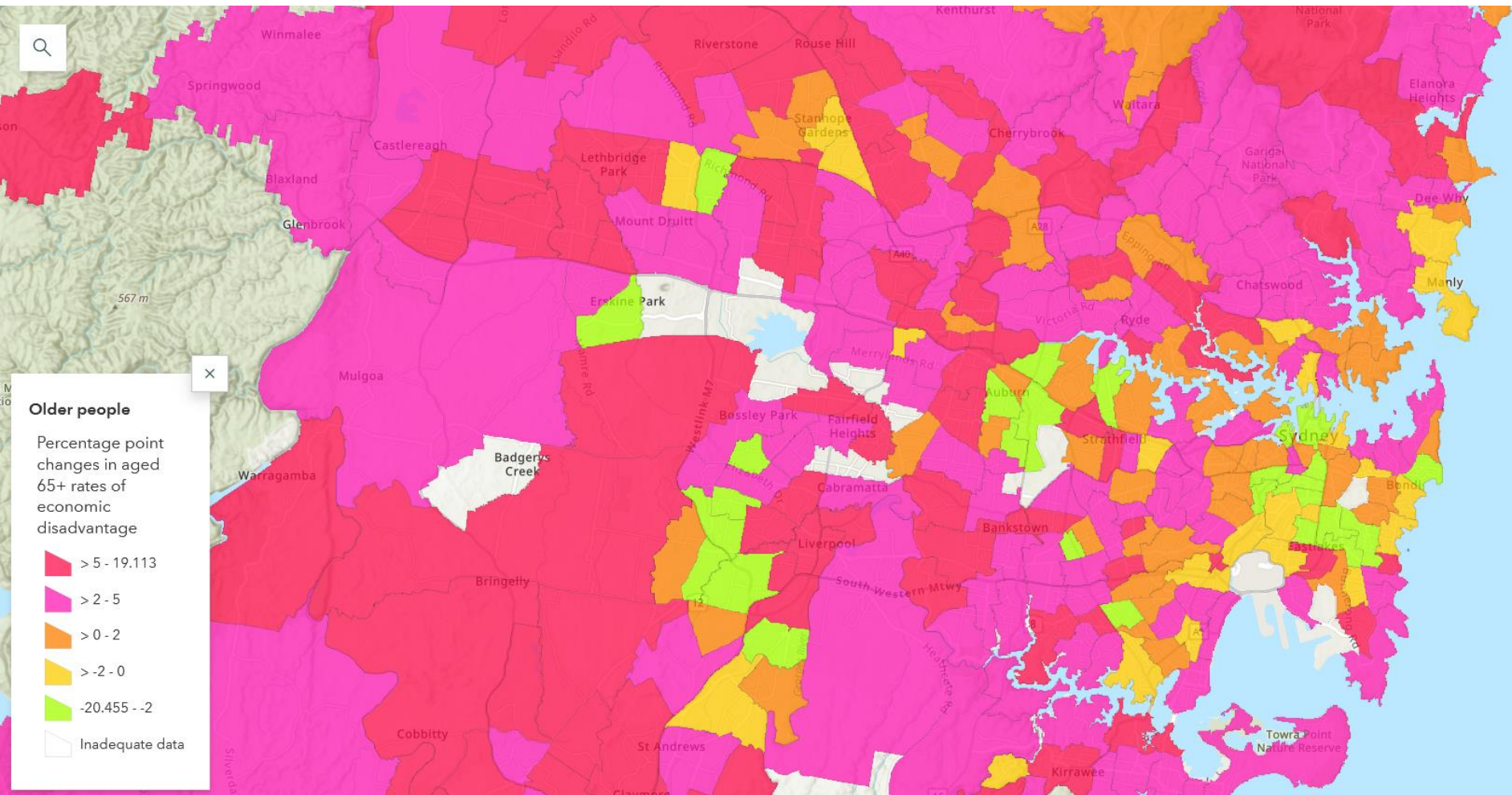
12 Key Themes

(2/3)



Older people experienced an alarming growth in poverty

Greater Sydney - Change in rates for 65+



12 Key Themes

(2/3)



Older people experienced an alarming growth in poverty



Children still face the highest rates of poverty in NSW of all age groups



Being unemployed or not in the labour force are two of the highest risk indicators of poverty...



..but employment is not a guarantee against poverty

12 Key Themes

(3/3)



Public housing is no longer the safety net it used to be



Poverty rates for private renters in Greater Sydney are intensifying

Poverty Rates for Private Renters – NSW

Private renters

Private renters in economic disadvantage

20.1% - 57.6%

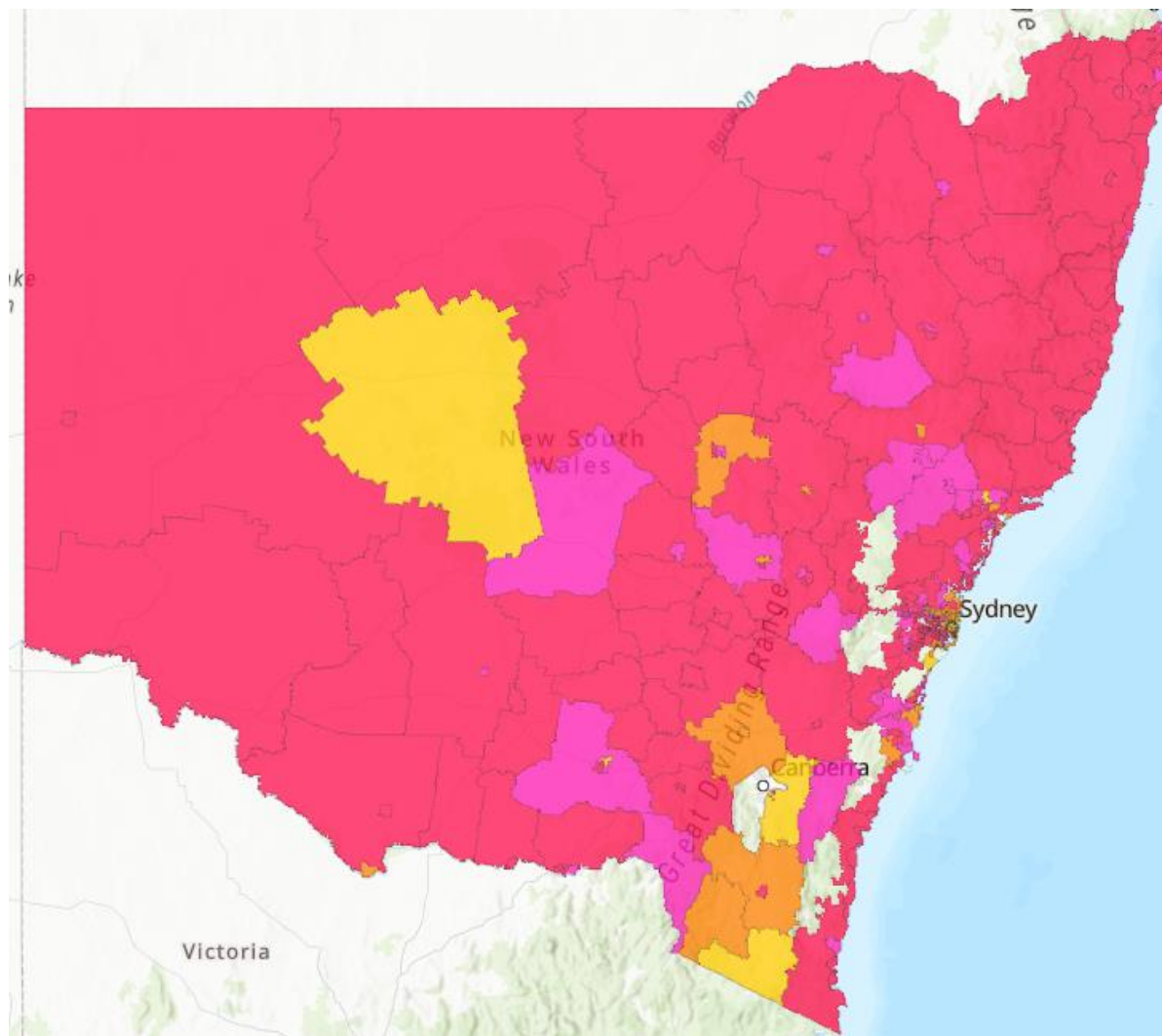
15.1% - 20%

10.1% - 15%

5.1% - 10%

2.1% - 5%

Inadequate data



12 Key Themes

(3/3)



Public housing is no longer the safety net it used to be



Poverty rates for private renters in Greater Sydney are intensifying



Living by yourself or parenting on your own puts you at significant risk of poverty



Certain communities are at far greater risk of living in a low-income household

Tool #1: Online Mapping Tool



- Mapping visualisation of SA2 small-scale poverty data across NSW
- Two sets of maps:
 - NSW 2021 estimate by SA2
 - Estimated changes 2016-2021 in NSW by SA2
- Ability to filter by all demographic groups in the research (sex, age, employment, household composition, household tenure, low-income household rates)

Tool #2: SA2 Dashboards



- Dashboard visualisation of key data for individual SA2s, presenting four key demographics:
 - Age
 - Household Composition
 - Employment
 - Household Ownership
 - Sex
- For each of these, it presents:
 - Poverty rate for each sub-group (e.g. children)
 - Comparison to the relevant regional average
 - Change since 2016